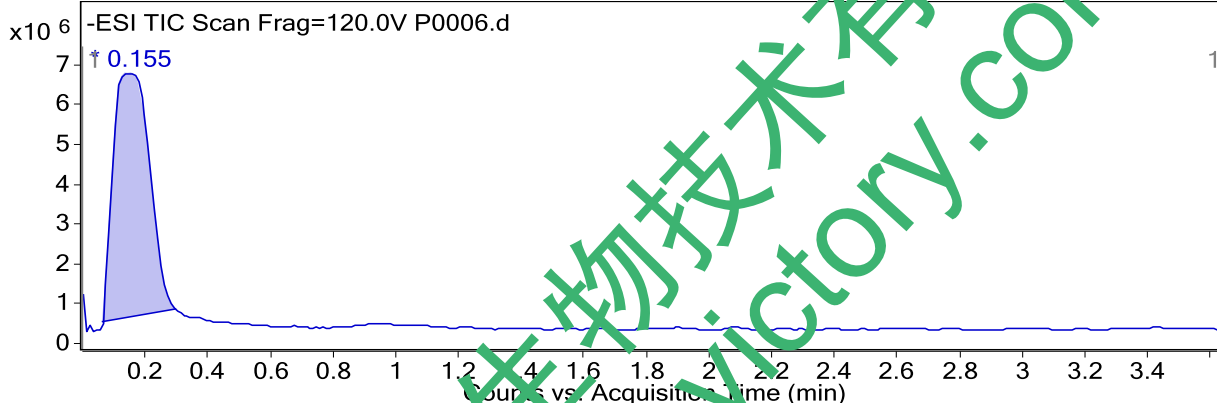


Qualitative Analysis Report

Data Filename P0006.d **Sample Name** 4#
Sample Type Sample **Position** P1-E4
Instrument Name Instrument 1 **User Name**
Acq Method
IRM Calibration Status Not Applicable **DA Method** Default.m
Comment
User Chromatograms

Fragmentor Voltage 120 **Collision Energy** 0 **Ionization Mode** ESI

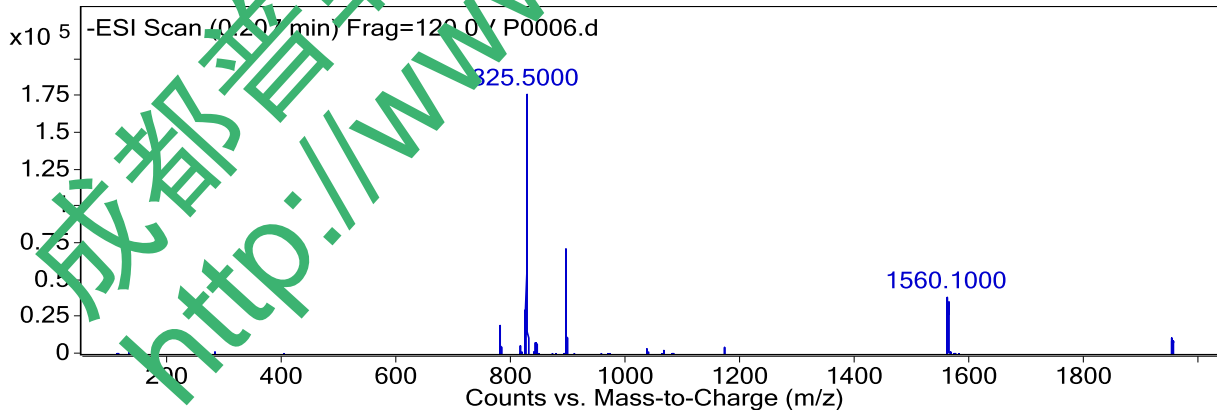


Integration Peak List

| Start | RT | End | Height | Area |
|-------|-------|-----|---------|----------|
| 0.062 | 0.155 | 0.3 | 6138968 | 494379.3 |

User Spectra

Fragmentor Voltage 120 **Collision Energy** 0 **Ionization Mode** ESI



Peak List

| m/z | z | Abund |
|--------|---|--------|
| 779.5 | | 20552 |
| 825.5 | 1 | 176678 |
| 826.5 | 1 | 82389 |
| 827.5 | 1 | 23882 |
| 893.5 | | 71961 |
| 894.6 | | 36572 |
| 895.5 | | 12950 |
| 1560.1 | 1 | 38841 |
| 1561.1 | 1 | 36395 |
| 1562.1 | 1 | 19477 |