

Display Report

Analysis Info

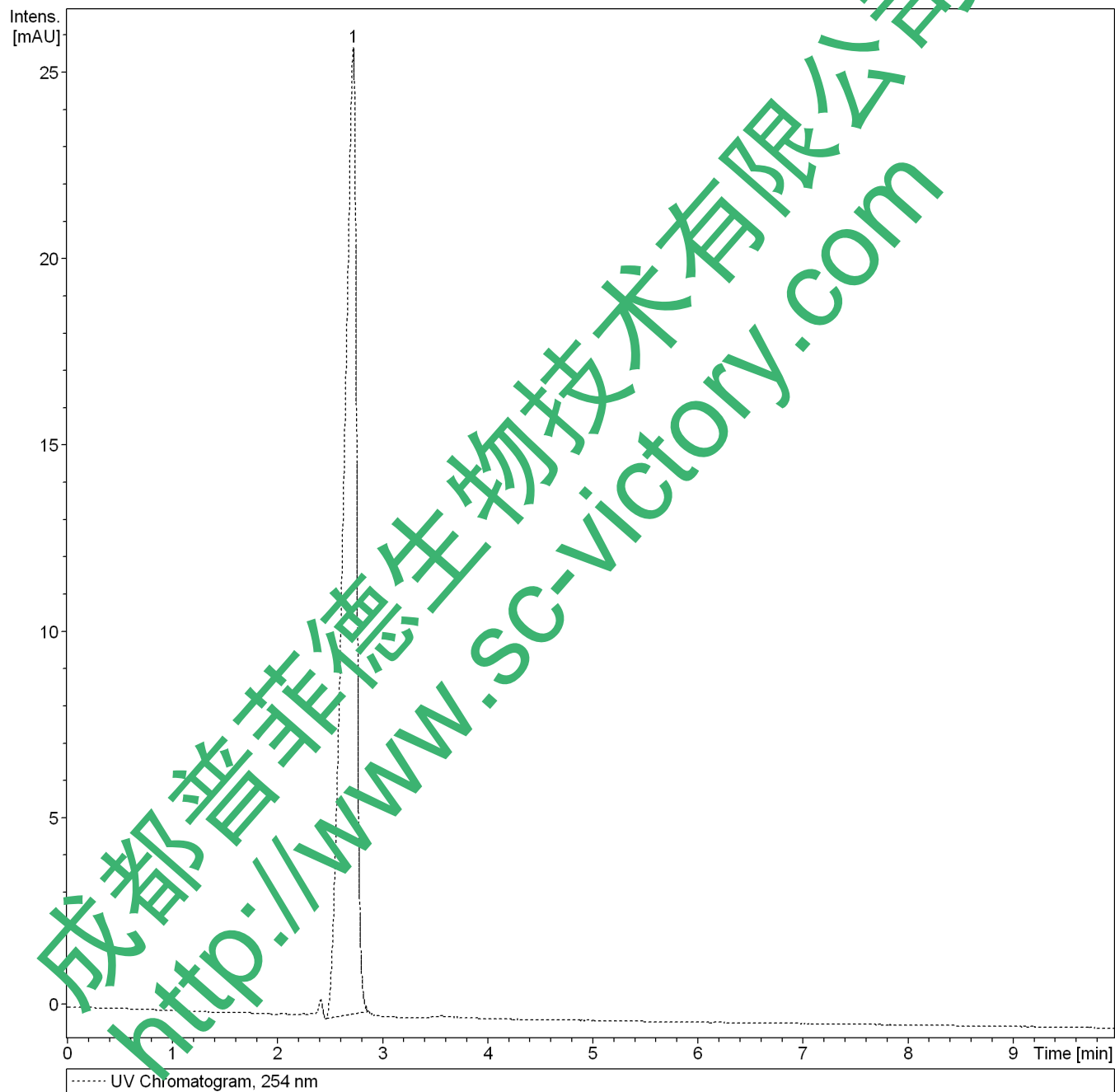
Analysis Name D:\Data\test\0504\GD_3_01_1195.d
Method 1195.m
Sample Name GD
Comment Agilent ZORBAX SB-C18 5um 4.6*250nm; Methanol: Water= 80:20

Acquisition Date 5/4/2014 1:51:28 PM

Operator bruker
Instrument amaZon SL

Acquisition Parameter

Ion Source Type	ESI	Ion Polarity	Positive	Alternating Ion Polarity	on
Mass Range Mode	UltraScan	Scan Begin	70 m/z	Scan End	1000 m/z
Capillary Exit	140.0 V	n/a	n/a	Trap Drive	50.6
Accumulation Time	3417 μ s	Averages	5 Spectra	Auto MS/MS	ff



Display Report

#	RT [min]	Area	Area Frac. %
1	2.7	222.88	100.0

Display Report

Analysis Info

Analysis Name D:\Data\test\0504\GD_3_01_1195.d
Method 1195.m
Sample Name GD
Comment Agilent ZORBAX SB-C18 5um 4.6*250nm; Methanol: Water= 80:20

Acquisition Date 5/4/2014 1:51:28 PM

Operator bruker
Instrument amaZon SL

Acquisition Parameter

Ion Source Type	ESI	Ion Polarity	Positive	Alternating Ion Polarity	on
Mass Range Mode	UltraScan	Scan Begin	70 m/z	Scan End	1000 m/z
Capillary Exit	140.0 V	n/a	n/a	Trap Drive	50.6
Accumulation Time	3417 μ s	Averages	5 Spectra	Auto MS/MS	off

